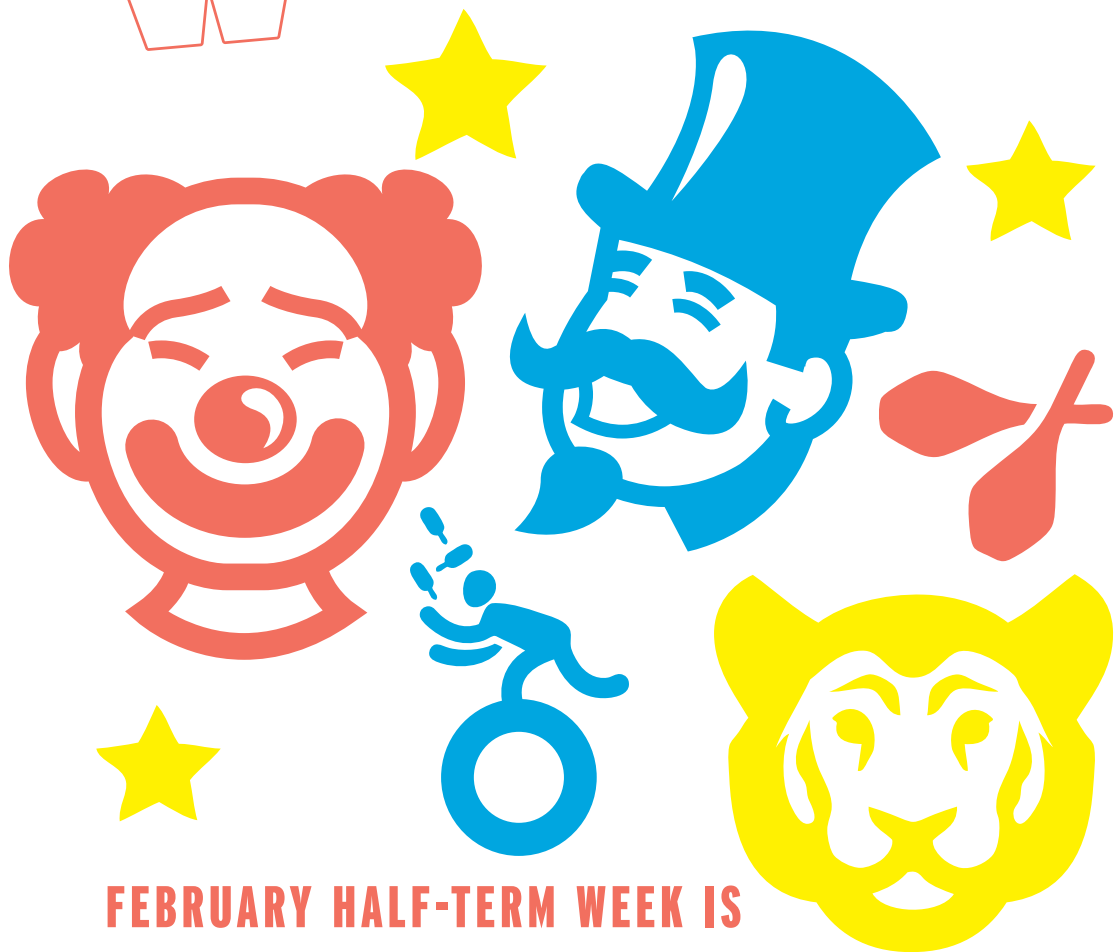


watermans

THU 18-SUN 21 FEB



FEBRUARY HALF-TERM WEEK IS

**CIRCUS
WEEK**

- Family show
- Circus performer
- Giant sculptures
- Circus skills workshops
- Mask making

Box Office: 020 8232 1010 watermans.org.uk

Join us for four days of Circus fun this half term. Be amazed by circus performance in our family show, learn new skills and join in making giant sculptures of circus characters! Full details on our website watermans.org.uk.

Nearly There Yet presents

THE PARTY

4-8
YRS

THU 18 - SUN 21 FEB,
11AM & 3PM,
£8, £28 FAMILY OF 4

A fun and surprising show
with amazing circus
performances!

A man excitedly waits for the guests to arrive at his party. The cake is made, the presents have arrived, and the music is playing - all he needs are his friends to make this the best birthday ever. Enter some uninvited visitors: a French cyclist, a man dressed as a giant chicken and a mysterious stranger who has apparently never had a birthday. An endlessly entertaining, fantastically engaging show for all the family (and perfect for birthday celebrations!).

45 MINS



PAUL INCREDIBLE

ALL
AGES

THU 18 - SUN 21 FEB,
VARIOUS TIMES
THROUGHOUT THE DAY
FREE

Paul Incredible, Circus performer extraordinaire will be wandering the corridors of Watermans amazing you with his stunning feats! He might even throw in a bit of magic if you're lucky...



Big Art present

GIANT SCULPTURES & MASK MAKING

ALL
AGES

THU 18 & FRI 19, 10AM, 12PM, 2PM, 4PM (£4)

Giant elephant and clown sculptures will rise 6 feet into the air, as children join in to bring them to life as part of this fun arts & crafts workshop. You'll also make a clown or animal mask to take home with you.

50 MINS



WATERMANS - YOUR LOCAL ARTS CENTRE

40 High Street, Brentford, TW8 ODS
Box Office: Open daily 1pm-9pm
watermans.org.uk



London Borough
of Hounslow



Supported with public funding by
ARTS COUNCIL
ENGLAND